



Symbol or Keyword(s)



Log in

Sign up



Equities Indexes Commodities Currencies News Analysis Top &amp; Flop Market Screener Tools Watchlists Our Services

**Save on DIY Building Kits**up to 45% off Steel Buildings, Perfect for:  
Garages, Workshops & More!**SAVE!**

FUTURE BUILDINGS

4-Traders Homepage &gt; Equities &gt; SHENZHEN STOCK EXCHANGE &gt; Hebei Iron And Steel Co Ltd 000709 CNE000000H20

**HEBEI IRON AND STEEL CO LTD (000709)**

+ Add to my list

1

Like

0

No quotes available

-- CNY

--.--%

01/12

01/11

2015

China stocks close higher as central bank tries to stabilize yuan

China stocks close down at lowest level since September

HEBEI IRON AND : HBIS, CIC to Invest in Serbia's Iron, Steel Indust..

[Summary](#) [News](#) [Analysis](#) [Calendar](#) **Company** [Financials](#) [Consensus](#) [Revisions](#)

HEBEI IRON AND STEEL CO LT REPORT: exclusively and for free\*.

[Download here »](#)**Business Summary****Engages in the smelting and processing of iron and steel products**

Hebei Iron &amp; Steel Co., Ltd. engages in the manufacture and process of iron and steel products.

Its products include steel, steel billet, and vanadium and titanium products.

Its other activities include electric machinery repairing, manufacturing and supplying of oxygen and metallurgy technology services.

The company was founded on June 29, 1994 and is headquartered in Shijiazhuang, China.

Number of employees : 45 430 persons.

**Sales per Businesses**

	2013		2014		Delta
	CNY (in Million)	%	CNY (in Million)	%	
Iron and Steel Products	110,246	100%	98,249	100%	-12.21%

**Sales per Regions**

	2013		2014		Delta
	CNY (in Million)	%	CNY (in Million)	%	
China	101,785	92.3%	91,848	93.5%	-10.82%
International	1,255	1.1%	3,218	3.3%	+61.01%

**Sector**[Basic Materials](#)[Mineral Resources](#)[Metals & Mining](#)[Steel](#)[Steel - NEC](#)

ADVERTISEMENT

**Sector Steel**

Growth (Revenue)

Profitability

We use cookies to allow you to log in to your account and share content, to carry out statistics, and to show you ads based on your interests.

[See our Cookie Policy](#)[Close](#)

Name	Age	Since	Title
<a href="#">Gui Yang Li, PhD</a>	57	-	General Manager & Director
<a href="#">Yong Yu, PhD</a>	53	-	Chairman
<a href="#">Qiang Xing</a>	60	-	Chairman-Supervisory Board
<a href="#">Ping Kong, PhD</a>	60	-	Director
<a href="#">Zhi Qiang Liu</a>	50	-	Director-Supervisory Board & Director-Auditing
<a href="#">Hai Zhang, PhD</a>	57	-	Director
<a href="#">Zhao Feng Peng</a>	57	-	Vice Chairman
<a href="#">Zhen Suo Liu</a>	53	-	Director
<a href="#">Zhen Wang</a>	43	-	Independent Director
<a href="#">Gui Hua Lu, PhD</a>	48	-	Independent Director

**Shareholders**

Hebei Iron And Steel Co Ltd (000709 - SHENZHEN STOCK EXCHANGE)

Name	Equities	%
Hebei State-Owned Assets Supervision & Admin. Commission	6,452,462,494	60.8%

[POSCO](#) [FOSUN INTERNATIONAL](#) [NUCOR CORPORATION](#) [VALE SA](#) [THYSSENKRUPP AG](#) [SEVERSTAL' PAO](#) [ARCELOMITTAL](#) [HEBEI IRON AND ST.](#) [ANGANG STEEL COMP.](#) [HYUNDAI STEEL CO](#) [VOESTALPINE AG](#) [NOVOLIPETSK STEEL](#) [STEEL DYNAMICS I.](#) [SHANXI TAIGANG ST.](#) [EREGLI DEMIR VE C.](#) [TATA STEEL LIMITE.](#) [HAINAN MINING CO.](#) [MAANSHAN IRON & S.](#)

Yinhua Fund Management Co., Ltd.	46,324,562	0.44%
Rongtong Fund Management Co., Ltd.	28,090,262	0.26%
E Fund Management Co., Ltd.	22,588,644	0.21%
Harvest Fund Management Co., Ltd.	21,016,826	0.20%
Zhi Yong Zhang	18,774,566	0.18%
National Social Insurance Fund Portfolio 020	16,985,040	0.16%
UBS SDIC Fund Management Co., Ltd.	16,777,273	0.16%
China Asset Management Co., Ltd.	10,576,827	0.100%
Fortune SG Fund Management Co., Ltd.	8,093,753	0.076%

» [Sector Steel](#)

#### Hebei Iron And Steel Co Lt : Connections

Handan Iron & Steel Group Co. Ltd.  
Hebei Iron & Steel Group Co. Ltd.

#### Company contact information

Hebei Iron & Steel Co., Ltd.  
No. 40, Yuhua West Road  
Qiaoxi District  
Shijiazhuang, Hebei 050000

Phone : +86.311.6677.0709  
Fax : +86.311.6677.8711  
Web : [www.hebtg.com](http://www.hebtg.com)

#### Holdings

Name	Equities	%	Valuation
<a href="#">Alderon Iron Ore Corp</a> (ADV)	25,858,889	19.6%	1,629,110 USD

© 2016 People , Fundamentals and Ownership

FACTSET

## Top 10 Stocks for 2016

These 10 stocks could deliver life-changing profits in 2016.



**4-traders.com** : [Equities](#) [Indexes](#) [Commodities](#) [Currencies](#) [News](#) [Analysis](#) [Top & Flop](#) [Market Screener](#) [Tools](#) [Watchlists](#) [Our Services](#)

**About** : [Surperformance SAS](#) [Contact us](#) [Advertise](#) [Legal informations](#) [About us](#) [RSS](#) [2.0](#)

**Stay Connected** : [Facebook](#) [Twitter](#)

**Partners** : [Börse: Aktien, Kurse und Nachrichten](#) [Best tweets](#)

Copyright © 2016 Surperformance. All rights reserved.



Symbol or Keyword(s)



Log in

Sign up



Equities Indexes Commodities Currencies News Analysis Top &amp; Flop Market Screener Tools Watchlists Our Services



4-Traders Homepage &gt; Equities &gt; SHANGHAI STOCK EXCHANGE &gt; Wuhan Iron and Steel Co., Ltd. 600005 CNE000000Z20

**WUHAN IRON AND STEEL CO., LTD. (600005)** [+ Add to my list](#) 1 Like 0

■ End-of-day quote - 01/19

**3.34 CNY** **+2.77%**

2015 **WUHAN IRON AND** : 1.1 Millimeter Hot-rolled Ultra-thin Plate of WISC..  
2015 **WUHAN IRON AND** : Report: Layoffs may loom next year  
2015 **WUHAN IRON AND** : Report: Layoffs may loom next year

[Summary](#) [Quotes](#) [Charts](#) [News](#) [Analysis](#) [Calendar](#) **Company** [Financials](#) [Consensus](#) [Revisions](#)**WUHAN IRON AND STEEL CO., REPORT: exclusively and for free\*.**[Download here »](#)**Sector**[Basic Materials](#)[Mineral Resources](#)[Metals & Mining](#)[Steel](#)[Iron, Steel Mills & Foundries](#)**Business Summary****Manufactures and distributes cold-rolled carbon steel**

Wuhan Iron & Steel Co. Ltd. engages in the processing and manufacture of iron, steel, and equipments for mining, coking, steel-making, iron-making, rolling and supporting auxiliary facilities.

Its business segments are Iron & Steel Industries and Related Industries.

Its products include silicon steel products, hot-rolled products, cold-rolled products, medium plate products, section steel products, and wire and rod products.

The company was founded in 1954 and is headquartered in Wuhan, China.

**Number of employees** : 27 760 persons.

**Sales per Businesses**

	2013		2014		Delta
	CNY (in Million)	%	CNY (in Million)	%	
Hot - Rolled Products	47,192	52.7%	41,767	42%	-12.99%
Cold - Rolled Products	34,725	38.8%	35,760	36%	+2.9%
Other Service Income	7,664	8.6%	21,846	22%	+64.92%

**Sales per Regions**

We use cookies to allow you to log in to your account and share content, to carry out statistics, and to show you ads based on your interests.

[See our Cookie Policy](#) [Close](#)

China	89,573	100%	99,365	100%	+9.85%
-------	--------	------	--------	------	--------

**Managers**

Name	Age	Since	Title
<a href="#">Ji Xin Zou</a>	48	-	General Manager & Director
<a href="#">Qi Lin Deng, MBA</a>	64	2008	Chairman
<a href="#">Tong Lin Zhong</a>	56	-	Chairman-Supervisory Board
<a href="#">Chen Peng, PhD</a>	61	2008	Director & General Manager
<a href="#">Xin He Yu</a>	59	2008	Director & Vice President
<a href="#">Wang Ming Hu, PhD</a>	51	-	Independent Director
<a href="#">Guo Qiang Ma</a>	53	-	Vice Chairman
<a href="#">Ji Chang Zhang, PhD</a>	53	-	Independent Director
<a href="#">Wei Xiao</a>	56	-	Independent Director
<a href="#">Xin Chuang Li</a>	52	-	Independent Director

**Shareholders**

Wuhan Iron and Steel Co., Ltd. (600005 - SHANGHAI STOCK EXCHANGE)

Name	Equities	%
------	----------	---

Growth (Revenue) Profitability

[INNER MONGOLIA BA.](#)  
 [BAOSHAN IRON & ST.](#)  
 [JFE HOLDINGS, INC.](#)  
 [CHINA STEEL CORPO.](#)  
 [JIANGSU SHAGANG C.](#)  
 [WUHAN IRON AND ST.](#)  
 [ARSELORMITTAL KRY.](#)  
 [SHANDONG IRON AND.](#)  
 [KOBE STEEL, LTD.](#)  
 [JSW STEEL LIMITED](#)  
 [GANSU JIU STEEL G.](#)  
 [BHARAT FORGE LTD](#)  
 [XINXING DUCTILE I.](#)  
 [BENGANG STEEL PLA.](#)  
 [APERAM](#)  
 [ACERINOX SA](#)  
 [SIDERAR S.A.I.C.](#)  
 [TERNIUM SA \(ADR\)](#)  
 [CHONGQING IRON & ..](#)  
 [NANJING IRON & ST.](#)

China State-Owned Assets Supervision & Admn Commission	6,795,503,954	67.3%
Shenzhen Jifu Investment Co., Ltd.	215,956,834	2.14%
Tao Yang	51,470,795	0.51%
E Fund Management Co., Ltd.	30,135,710	0.30%
China Asset Management Co., Ltd.	28,035,083	0.28%
Rui Fen Yang	21,800,000	0.22%
Daton Securities Co., Ltd. (Investment Management)	14,290,977	0.14%
Harvest Fund Management Co., Ltd.	13,276,572	0.13%
Qiang Liao	13,223,456	0.13%
Zhao Yuan Wang	12,511,454	0.12%

[» Sector Steel](#)

#### Wuhan Iron and Steel Co., : Connections

 [Hebei Iron And Steel Co Ltd](#)

Wuhan Foreign Trade Terminal Co., Ltd. (Wuhan Port)  
Wuhan Echeng Iron & Steel Co., Ltd.  
Hubei United Development Investment Group Co., Ltd.  
Wuhan Iron & Steel Group Finance Co. Ltd.  
Wuhan Iron & Steel Group Corp.  
Wuhan Steel Electric Co., Ltd.  
Guangxi Iron & Steel Group Co., Ltd.  
Guangdong Iron & Steel Group Corp.  
Hubei Institute of Metals  
China Iron & Steel Industry Association  
Ningxia Power Generation Co. (Group) Ltd.  
Huadian Zouxian Power Generation Co., Ltd.  
Zhejiang Zhoushan Port Terminal Co., Ltd.  
Huadian Qingdao Power Co., Ltd.  
Wuhan Iron & Steel Group Hainan Co., Ltd.  
Huadian Weifang Power Generation Co., Ltd.  
Wu Taicang Port Terminal Co., Ltd.  
Sichuan Guangan Power Generation Co., Ltd.  
Societe Generale (China) Ltd.  
Sichuan Huadian Luding Hydropower Co., Ltd.

#### Company contact information

Wuhan Iron & Steel Co. Ltd.  
No. 3, Yangang Road  
Qingshan District  
Wuhan, Hubei 430083

Phone : +86.27.8680.2031  
Fax : +86.27.8630.6023  
Web : [www.wisco.com.cn](http://www.wisco.com.cn)

© 2016 People , Fundamentals and Ownership **FACTSET**

## Top 10 Stocks for 2016

These 10 stocks could deliver life-changing profits in 2016.

○ ○



**4-traders.com** : Equities Indexes Commodities Currencies News Analysis Top & Flop Market Screener Tools Watchlists Our Services

**About** : Surperformance SAS Contact us Advertise Legal informations About us  

**Stay Connected** : Facebook Twitter

**Partners** : Börse: Aktien, Kurse und Nachrichten Best tweets



Symbol or Keyword(s)



Log in

Sign up



Equities Indexes Commodities Currencies News Analysis Top &amp; Flop Market Screener Tools Watchlists Our Services

**Save on DIY Building Kits**up to 45% off Steel Buildings, Perfect for:  
Garages, Workshops & More!**SAVE!**

FUTURE BUILDINGS

4-Traders Homepage &gt; Equities &gt; SHANGHAI STOCK EXCHANGE &gt; Baoshan Iron &amp; Steel Co., Ltd. 600019 CNE0000015R4

**BAOSHAN IRON & STEEL CO., LTD. (600019)**

+ Add to my list

4

Like

0

■ End-of-day quote - 01/19

**6.02 CNY****+3.08%**

11:50a

2015

2015

**BAOSHAN IRON & Steel 2015 Net down 83.40%**

DJ PetroChina to Consolidate Pipeline Assets into PetroChina Pipelin..

**BAOSHAN IRON & Steel Q1-Q3 Net Down 55%**[Summary](#) [Quotes](#) [Charts](#) [News](#) [Analysis](#) [Calendar](#) **Company** [Financials](#) [Consensus](#) [Revisions](#)**BAOSHAN IRON & STEEL CO., REPORT:** exclusively and for free\*.[Download here »](#)**Business Summary****Engages in the manufacture and sale of iron and steel products**

Baoshan Iron &amp; Steel Co., Ltd. engages in the manufacture and sale of iron and steel products.

Its products include carbon steel, stainless steel, and special steel.

The carbon steel consists of bar, heavy plate, hot rolled steel sheet, cold rolled steel sheet, wire rods, and pipe tube.

The stainless steel covers hot rolled steel sheet and cold rolled steel sheet.

The special steel supplied in forms of cake, ring, rod, tube, wire, strip, forging, and casting.

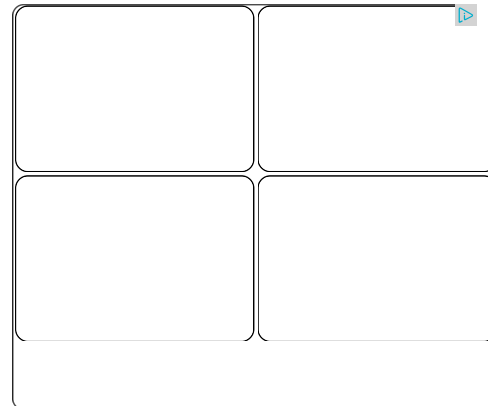
The company was founded on February 3, 2000 and is headquartered in Shanghai, China.

**Number of employees** : 37 838 persons.**Sales per Businesses**

	2013		2014		Delta
	CNY (in Million)	%	CNY (in Million)	%	
Iron & Steel	188,328	99.1%	24,945	13.3%	-654.97%
Other	1,360	0.7%	-84.39	-0%	-

**Sector**[Basic Materials](#)[Mineral Resources](#)[Metals & Mining](#)[Steel](#)[Iron, Steel Mills & Foundries](#)

## ADVERTISEMENT



We use cookies to allow you to log in to your account and share content, to carry out statistics, and to show you ads based on your interests.

[See our Cookie Policy](#) [Close](#)

E-commerce	-	-	15,071	8%	-
Chemicals	-	-	4,012	2.1%	-
Information Technology	-	-	3,113	1.7%	-
Gold Loans	-	-	465.58	0.2%	-
Finance Expenses	-	-	-	-	-
Deferred Income Tax Assets	-	-	-	-	-
Inter-segment Eliminations	-	-	-	-	-

**Sales per Regions**

	2013		2014		Delta
	CNY (in Million)	%	CNY (in Million)	%	
China	189,988	100%	166,816	88.9%	-13.89%
International	-	-	21,057	11.2%	-
Finance Corporation Investment Gain	-	-	-84.39	-0%	-

**Managers**

Name	Age	Since	Title
------	-----	-------	-------

Growth (Revenue)

Profitability

[INNER MONGOLIA BA.](#)  
[BAOSHAN IRON & ST.](#)  
[JFE HOLDINGS, INC.](#)  
[CHINA STEEL CORPO.](#)  
[JIANGSU SHAGANG C.](#)  
[WUHAN IRON AND ST.](#)  
[ARSELORMITTAL KRY.](#)  
[SHANDONG IRON AND.](#)  
[KOBEL STEEL, LTD.](#)  
[JSW STEEL LIMITED](#)  
[GANSU JIU STEEL G.](#)  
[BHARAT FORGE LTD](#)  
[XINXING DUCTILE I.](#)  
[BENGANG STEEL PLA.](#)  
[APERAM](#)  
[ACERINOX SA](#)  
[SIDERAR S.A.I.C.](#)  
[TERNIUM SA \(ADR\)](#)  
[CHONGQING IRON & ..](#)  
[NANJING IRON & ST.](#)

<a href="#">Zhi Hao Dai</a>	53	-	President & Director
<a href="#">Zhan Ying Liu</a>	61	2006	Chairman-Supervisory Board
<a href="#">Ke Bing Zhu, CPA</a>	42	-	Chief Financial Officer & Board Secretary
<a href="#">Yao Wen Wu</a>	72	-	Director
<a href="#">Ker Wei Pei PhD, MBA</a>	59	2006	Director
<a href="#">Zhou Li Zhao, PhD</a>	60	2000	Director
<a href="#">Jun Sheng Zhu EMBA</a>	56	2000	Director
<a href="#">An Lin</a>	60	-	Member-Supervisory Board
<a href="#">Kun Zong Wu, MBA</a>	45	-	Member-Supervisory Board
<a href="#">Li Wang</a>	60	2006	Director

» [Sector Steel](#)

**Baoshan Iron & Steel Co., : Connections**

-  [Zhong An Real Estate Limited](#)
-  [Zhejiang Expressway Co., Ltd.](#)
-  [Want Want China Holdings Ltd.](#)
-  [Shanghai Baosight Software Co. Ltd](#)
-  [China Pacific Insurance \(Group\) Co., Ltd](#)
-  [AAG Energy Holdings Ltd](#)

The Accounting Academy  
Baosteel Group Corp.  
Baosteel Resources Co. Ltd.  
Guangdong Iron & Steel Group Corp.  
Bao-Island Enterprises Ltd.  
China National Coal Group Corp.  
Shanghai Baosteel Engineering & Technology Co. Ltd.

**Company contact information**


Baoshan Iron & Steel Co., Ltd.  
Baosteel Administrative Center  
885 Fujin Road  
Baoshan District  
Shanghai 201900

Phone : +86.21.2664.7000  
Fax : +86.21.2664.6999  
Web : [www.baosteel.com](http://www.baosteel.com)

© 2016 People , Fundamentals and Ownership

**FACTSET**

**Shareholders**

Baoshan Iron & Steel Co., Ltd. (600019 - SHANGHAI STOCK EXCHANGE) 

Name	Equities	%
China State-Owned Assets Supervision & Admn Commission	13,130,265,267	79.9%
China Life Asset Management Co., Ltd.	1,381,568,777	8.41%
CSOP Asset Management Ltd.	63,286,643	0.39%
Ping An Pension Insurance Co. Ltd.	35,702,752	0.22%
BlackRock Asset Management North Asia Ltd.	35,466,915	0.22%
Harvest Fund Management Co., Ltd.	24,451,029	0.15%
Morgan Stanley Investment Management, Inc.	23,708,496	0.14%
Hebei State-Owned Assets Supervision & Admin. Commission	23,049,775	0.14%
Huaxin Huitong Group	21,576,966	0.13%
China Asset Management Co., Ltd.	21,535,675	0.13%

**Holdings**

Name	Equities	%	Valuation
<a href="#">Shanghai Baosight Software Co. Ltd</a> (600845)	189,222,891	79.9%	1,684,869,005 USD
SHANGHAI BAOSIGHT SOFTWARE DOM SH	28,142,549	69.7%	250,585,478 USD
<a href="#">Shanxi Xishan Coal and Electricity Power</a> (000983)	42,658,306	1.35%	39,941,398 USD
<a href="#">Shanxi Lu'an Environmental Energy Dev.Co</a> (601699)	15,353,385	0.51%	15,179,431 USD
<a href="#">Shanghai Datun Energy Resources Co. Ltd.</a> (600508)	5,572,707	0.77%	8,830,734 USD
<a href="#">Kailuan Energy Chemical Co Ltd</a> (600997)	4,660,000	0.38%	4,004,385 USD
<a href="#">Datong Coal Industry Co., Ltd</a> (601001)	3,600,000	0.22%	3,076,884 USD

La Costa Short  
Sleeve Rashgua...  
  
\$50



**4-traders.com** : [Equities](#) [Indexes](#) [Commodities](#) [Currencies](#) [News](#) [Analysis](#) [Top & Flop](#) [Market Screener](#) [Tools](#) [Watchlists](#) [Our Services](#)

**About** : [Superperformance SAS](#) [Contact us](#) [Advertise](#) [Legal informations](#) [About us](#)  

**Stay Connected** : [Facebook](#) [Twitter](#)

**Partners** : [Börse: Aktien, Kurse und Nachrichten](#) [Best tweets](#)





Symbol or Keyword(s)

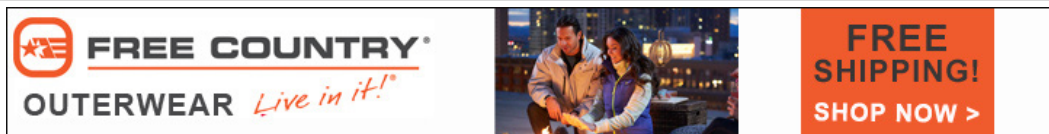


Log in

Sign up



Equities Indexes Commodities Currencies News Analysis Top &amp; Flop Market Screener Tools Watchlists Our Services



4-Traders Homepage &gt; Equities &gt; SHENZHEN STOCK EXCHANGE &gt; Bengang Steel Plates Co., Ltd. 000761 CNE000000TX8

**BENGANG STEEL PLATES CO., LTD. (000761)** [+ Add to my list](#) 0 Like [0](#)

No quotes available

-- CNY

--.--%

2015

BENGANG STEEL P : Plans to Finance CNY4bn

[Summary](#) [News](#) [Calendar](#) [Company](#) [Financials](#) [Revisions](#)

BENGANG STEEL PLATES CO., REPORT: exclusively and for free\*.

[Download here »](#)**Business Summary****Steel mill**

Bengang Steel Plates Co., Ltd. engages in the processing and trading of recycled metals including non-ferrous.

Its activities also include steel and iron making, rolling, and trading, oxygen making, special pre-shaped steel material, goods and technology import and export as well as recycling of gas dust and waste oil. The company was founded on March 27, 1997 and is headquartered in Liaoning, China.

**Number of employees** : 22 620 persons.**Sales per Businesses**

	2013		2014		Delta
	CNY (in Million)	%	CNY (in Million)	%	
Steel Plates	36,247	89.9%	37,865	91.4%	+4.27%
Other Service Income	3,125	7.7%	2,380	5.7%	-31.26%
Other	957.37	2.4%	1,166	2.8%	+17.93%
Steel Billets	0.113	0%	10.35	0%	+98.91%

**Sales per Regions**

2013		2014		Delta
CNY (in Million)	%	CNY (in Million)	%	

We use cookies to allow you to log in to your account and share content, to carry out statistics, and to show you ads based on your interests.

[See our Cookie Policy](#) [Close](#)**Managers**

Name	Age	Since	Title
<a href="#">Ai Min Cao</a>	50	2009	Chief Financial Officer, GM & Director
<a href="#">Jun You Liu</a>	64	2003	Chairman-Supervisory Board
<a href="#">Xiao Fang Zhang, PhD</a>	57	2010	Chairman
<a href="#">Gui Yu Zhang</a>	56	2009	Vice General Manager & Head-Technical Center
<a href="#">Ji Chen Zhang</a>	60	2007	Secretary & Director
<a href="#">Wei Zhao</a>	57	2007	Member-Supervisory Board & Vice General Manager
<a href="#">Bing Fu Tian</a>	67	2007	Independent Director
<a href="#">En Quan Liu</a>	62	2009	Member-Supervisory Board
<a href="#">Pu Wang</a>	54	2008	Member-Supervisory Board
<a href="#">Chao Sheng Tang</a>	54	2011	Director

**Shareholders**

Bengang Steel Plates Co., Ltd. (000761 - SHENZHEN STOCK EXCHANGE)

Name	Equities	%
Liaoning State Owned Asset Sup & Admin Commission	2,457,560,978	89.8%
ICBC Credit Suisse Asset Management Co., Ltd.	3,061,999	0.11%

**Sector**[Basic Materials](#)[Mineral Resources](#)[Metals & Mining](#)[Steel](#)[Iron, Steel Mills & Foundries](#)

ADVERTISEMENT

**WebEx™ Official Site**Meet Online with the Most  
Secure, Industry Standard  
Web Meeting Tool.

○ ○

Growth (Revenue) Profitability

[INNER MONGOLIA BA.](#)  
[BAOSHAN IRON & ST.](#)  
[JFE HOLDINGS, INC.](#)  
[CHINA STEEL CORPO.](#)  
[JIANGSU SHAGANG C.](#)  
[WUHAN IRON AND ST.](#)  
[ARSELORMITTAL KRY.](#)  
[SHANDONG IRON AND.](#)  
[KOBE STEEL, LTD.](#)  
[JSW STEEL LIMITED](#)  
[GANSU JIU STEEL G.](#)  
[BHARAT FORGE LTD](#)  
[XINXING DUCTILE I.](#)  
[BENGANG STEEL PLA.](#)  
[APERAM](#)  
[ACERINOX SA](#)  
[SIDERAR S.A.I.C.](#)  
[TERNIUM SA \(ADR\)](#)  
[CHONGQING IRON & ..](#)  
[NANJING IRON & ST.](#)

Everbright Pramerica Fund Management Co., Ltd.	0	-
China International Fund Management Co., Ltd.	0	-

[» Sector Steel](#)

**Bengang Steel Plates Co., : Connections**

Benxi Steel & Iron Group Co. Ltd.  
Bengang Group Co. Ltd.  
Benxi Iron & Steel Group Co. Ltd.  
Liaoning Public Co. Association

**Company contact information**

Bengang Steel Plates Co., Ltd.  
No.16, Renmin Road  
Pingshan District  
Benxi City, Liaoning 117000

Phone : +86.414.7828360  
Fax : +86.414.7824158  
Web : [www.bxsteel.com](http://www.bxsteel.com)

© 2016 People , Fundamentals and Ownership

**FACTSET**

## Top 10 Stocks for 2016

These 10 stocks could deliver life-changing profits in 2016.



**4-traders.com :** Equities Indexes Commodities Currencies News Analysis Top & Flop Market Screener Tools Watchlists Our Services

**About :** Surperformance SAS Contact us Advertise Legal informations About us  2.0

**Stay Connected :** Facebook Twitter

**Partners :** Börse: Aktien, Kurse und Nachrichten Best tweets

Copyright © 2016 Surperformance. All rights reserved.





Symbol or Keyword(s)



Log in

Sign up



Equities Indexes Commodities Currencies News Analysis Top &amp; Flop Market Screener Tools Watchlists Our Services

REPAIR ALUMINUM QUICKLY

With HTS-2000 Brazing Rods Strongest, Fastest and Easiest



4-Traders Homepage &gt; Equities &gt; SHANGHAI STOCK EXCHANGE &gt; Shandong Iron and Steel Co Ltd 600022 CNE000001JV1

**SHANDONG IRON AND STEEL CO LTD (600022)** [+ Add to my list](#) 0 Like [0](#)

■ End-of-day quote - 01/19

**2.93 CNY****+2.45%**

2015 SHANDONG IRON A : Q1-3 Shandong Iron & Steel Lost CNY775mn  
2015 SHANDONG IRON A : Transfer Assets, Debts to Controller  
2015 SHANDONG IRON A : Turns Loss into Profit I H1

[Summary](#) [Quotes](#) [Charts](#) [News](#) [Calendar](#) **Company** [Financials](#) [Revisions](#) SHANDONG IRON AND STEEL CO REPORT: exclusively and for free\*. [Download here »](#)**Business Summary****Engaged in the smelting, processing and distribution of iron and steel**

Shandong Iron &amp; Steel Co., Ltd. engages in the smelting and rolling processing of ferrous metal.

Its product includes smelting and processing of iron and steel; manufacture and sale of steel, forgings, coke, and coking products; manufacture and sale of slag and steel by-products; sale of iron ore and the like; provide gas supply, power generation, and heating.

The company was founded on December 26, 2000 and is headquartered in Jinan, China.

**Number of employees** : 31 882 persons.**Sales per Businesses**

	2013		2014		Delta
	CNY (in Million)	%	CNY (in Million)	%	
Others	33,123	47%	1,056	2%	-3036.9%
Billet	12,417	17.6%	3,260	6.3%	-280.94%
Plate	11,289	16%	12,622	24.3%	+10.57%
Coked Products	9,517	13.5%	5,733	11.1%	-65.99%
Cold Hot Rolling	4,118	5.8%	-	-	-
Steel Bars	-	-	8,590	16.6%	-
Profiles	-	-	6,339	12.2%	-
Coil	-	-	6,058	11.7%	-
Bar	-	-	4,109	7.9%	-
Other Business	-	-	4,042	7.8%	-
Iron Ores	-	-	57.23	0.1%	-

**Sales per Regions**

	2013		2014		Delta
	CNY (in Million)	%	CNY (in Million)	%	
China	70,463	100%	51,864	100%	-35.86%

**Managers**

Name	Age	Since	Title
<a href="#">Qi Xiang Chen</a>	59	2012	General Manager & Director
<a href="#">Hao Ren</a>	60	2012	Chairman
<a href="#">Bin Su</a>	54	2012	Chairman-Supervisory Board
<a href="#">Xian Gang Wan</a>	54	-	Chief Financial Officer
<a href="#">Xiao Feng Ping</a>	67	2009	Independent Director
<a href="#">Xiu Yuan Liu</a>	53	2012	Director-Supervisory Board
<a href="#">Ai Guo Wang, PhD</a>	52	2012	Independent Director

**Sector**

[Basic Materials](#)  
... [Mineral Resources](#)  
... [Metals & Mining](#)  
... [Steel](#)  
... [Iron, Steel Mills & Foundries](#)

ADVERTISEMENT

24%  
off

[Sennheiser PC 7 USB ...](#) [Logitech ClearChat ...](#)  
**CDN\$ 44.99** **CDN\$ 45.12**


**Sector Steel**

Growth (Revenue) Profitability

[INNER MONGOLIA BA...](#)  
 [BAOSHAN IRON & ST...](#)  
 [JFE HOLDINGS, INC.](#)  
 [CHINA STEEL CORPO...](#)  
 [JIANGSU SHAGANG C...](#)  
 [WUHAN IRON AND ST...](#)  
 [ARSELORMITTAL KRY...](#)  
 [SHANDONG IRON AND...](#)  
 [KOBE STEEL, LTD.](#)  
 [JSW STEEL LIMITED](#)  
 [GANSU JIU STEEL G...](#)  
 [BHARAT FORGE LTD](#)  
 [XINXING DUCTILE I...](#)  
 [BENGANG STEEL PLA...](#)  
 [APERAM](#)  
 [ACERINOX SA](#)  
 [SIDERAR S.A.I.C.](#)  
 [TERNIUM SA \(ADR\)](#)  
 [CHONGQING IRON & ...](#)  
 [NANJING IRON & ST...](#)

<a href="#">Xiang Yang Chen, PhD</a>	50	2012	Director
<a href="#">Zhi Chao Bi</a>	60	2012	Director
<a href="#">Ke Ning Tian</a>	60	-	Director

#### Shareholders

Shandong Iron and Steel Co Ltd (600022 - SHANGHAI STOCK EXCHANGE) 

Name	Equities	%
Shandong State-Owned Asset Sup. & Adm. Commission	4,929,793,382	76.6%
China Securities Finance Corp. Ltd.	8,067,700	0.13%
Ju Ying Zhao	5,227,434	0.081%
Rong Zhong	5,096,420	0.079%
Chuan Jiang Luo	4,120,000	0.064%
Bao Ying Huang	3,640,200	0.057%

We use cookies to allow you to log in to your account and share content, to carry out statistics, and to show you ads based on your interests.

[See our Cookie Policy](#) [Close](#)

China Universal Asset Management Co., Ltd.	448,319	0.0070%
Harvest Global Investments Ltd.	102,100	0.0016%

[» Sector Steel](#)

#### Shandong Iron and Steel Co : Connections

 [Shandong Chenming Paper Holdings Limited](#)

 [Hisense Kelon Electrical Hldngs Co., Ltd](#)

 [Changshouhua Food Co Ltd](#)

Shandong University of Finance & Economics

Qingdao Gon Technology Co Ltd

Accounting Society of China

Laiwu Steel Group Co. Ltd.

Nationwide Asset Valuation Education Association

Jinan Iron & Steel Group Corp.

China Appraisal Society

Shandong Province Accounting Education Committee

Science of China

International Corp.

#### Company contact information

Shandong Iron & Steel Co., Ltd.

Building 4, Shuntai Plaza

2000 Shunhua Road

Jinan, Shandong 250101

Phone : +86.531.6760.6889

Fax : +86.531.6760.6881

Web : [www.sdsteel.cc](http://www.sdsteel.cc)

© 2016 People , Fundamentals and Ownership

**FACTSET**

Business education  
has a new name.

Queen's School of Business is now  
**The Stephen J.R. Smith School of Business**  
at Queen's University.

Get to know Smith.



**4-traders.com** : [Equities](#) [Indexes](#) [Commodities](#) [Currencies](#) [News](#) [Analysis](#) [Top & Flop](#) [Market Screener](#) [Tools](#) [Watchlists](#) [Our Services](#)

**About** : [Surperformance SAS](#) [Contact us](#) [Advertise](#) [Legal informations](#) [About us](#) 

**Stay Connected** : [Facebook](#) [Twitter](#)

**Partners** : [Börse: Aktien, Kurse und Nachrichten](#) [Best tweets](#)

Copyright © 2016 Surperformance. All rights reserved.



Symbol or Keyword(s)

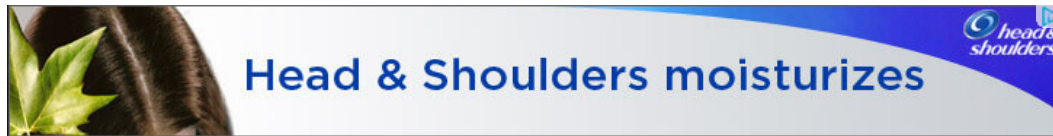


Log in

Sign up



Equities Indexes Commodities Currencies News Analysis Top &amp; Flop Market Screener Tools Watchlists Our Services



4-Traders Homepage &gt; Equities &gt; SHENZHEN STOCK EXCHANGE &gt; Angang Steel Company Limited 000898 CNE000000SQ4

**ANGANG STEEL COMPANY LIMITED (000898)**

+ Add to my list

1

Like 0

No quotes available

-- CNY

--.--%

2015

ANGANG STEEL : Q1-Q3 Loses Money

2015

ANGANG STEEL : 9-month net turns red to Rmb888m

2015

ANGANG STEEL : Expects Loss for Q3, Q1-Q3

[Summary](#) [News](#) [Analysis](#) [Calendar](#) **Company** [Financials](#) [Consensus](#) [Revisions](#)

ANGANG STEEL COMPANY LIMIT REPORT: exclusively and for free\*.

[Download here »](#)**Business Summary****Manufactures and distributes steel products**

Angang Steel Co., Ltd. engages in the production and sale of steel products.

Its products include hot rolled sheets, cold rolled sheets, galvanized steel sheets, colour coating plates, silicon steel, moderately thick plates, wire rods, large steel products and seamless steel pipes.

The company products are used in the following industries: automobile, construction, ship-building, home electrical appliances, railway construction and manufacture of pipelines.

Angang Steel was founded on May 8, 1997 and is headquartered in Anshan, China.

Number of employees : 39 446 persons.

**Sales per Businesses**

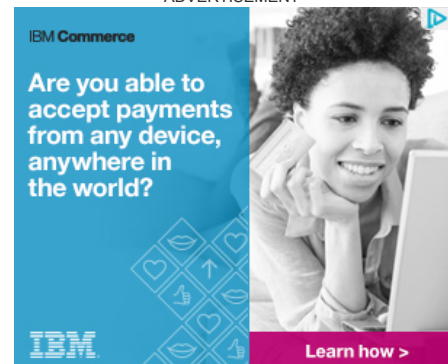
	2013		2014		Delta
	CNY (in Million)	%	CNY (in Million)	%	
Iron and Steel Products	75,325	100%	74,046	100%	-1.73%

**Sales per Regions**

	2013		2014		Delta
	CNY (in Million)	%	CNY (in Million)	%	
China	75,325	100%	74,046	100%	-1.73%

**Managers**

Name	Age	Since	Title
<a href="#">Yidong Wang, PhD</a>	48	-	Executive Director & General Manager
<a href="#">Xiao Gang Zhang, PhD</a>	62	-	Chairman
<a href="#">Wensheng Su</a>	60	2012	Chairman-Supervisory Board
<a href="#">Zi Ping Ren, PhD</a>	52	-	Chief Engineer
<a href="#">Fu Ping Tang, PhD</a>	58	-	Vice Chairman
<a href="#">Ming Chen</a>	55	-	Executive Director

**Sector**[Basic Materials](#)[Mineral Resources](#)[Metals & Mining](#)[Steel](#)[Steel - NEC](#)**ADVERTISEMENT****Sector Steel**

Growth (Revenue) Profitability

[CITIC LTD](#)  
[NIPPON STEEL & SU.](#)  
[POSCO](#)  
[FOSUN INTERNATIONAL.](#)  
[NUCOR CORPORATION](#)  
[VALE SA](#)  
[THYSSENKRUPP AG](#)  
[SEVERSTAL' PAO](#)  
[ARCELORMITTAL](#)  
[HEBEI IRON AND ST.](#)

[AP..](#)

re use of cookies to allow you to log in to your account and share content, to carry out statistics, and to show you ads based on your interests.

[See our Cookie Policy](#) [Close](#)

<a href="#">Ming Yi Shan</a>	63	-	Member-Supervisory Board
------------------------------	----	---	--------------------------

**Shareholders**

Angang Steel Company Limited (000898 - SHENZHEN STOCK EXCHANGE)

Name	Equities	%
China State-Owned Assets Supervision & Admn Commission	4,868,547,330	79.2%
Yu Lan Li	24,820,070	0.40%

[NOVOLIPETSK STEEL..](#)  
[STEEL DYNAMICS, I.](#)  
[SHANXI TAIGANG ST.](#)  
[EREGLI DEMIR VE C.](#)  
[TATA STEEL LIMITE.](#)  
[HAINAN MINING CO..](#)  
[MAANSHAN IRON & S.](#)

Guo Hua Chen	10,738,020	0.17%
Yao Hui Liang	10,440,000	0.17%
Mei Chu Tan	9,457,734	0.15%
Rong Liang Chen	6,394,110	0.10%
HSBC Global Asset Management (Hong Kong) Ltd.	6,024,630	0.098%
Lei Du	5,373,904	0.087%
Harvest Fund Management Co., Ltd.	4,917,800	0.080%
China Asset Management Co., Ltd.	4,844,130	0.079%

» [Sector Steel](#)

**Angang Steel Company Limit : Connections**

International Organization For Standardisation  
Anshan Iron & Steel Group Corp.  
Angang Group Co. Ltd.  
Organisation Internationale de Normalisation  
Standardization Administration of The PRC

**Company contact information**

Angang Steel Co., Ltd.  
Production Area of Angang Steel  
Tie Xi District  
Anshan, Liaoning 114021

Web : [www.ansteel.com.cn](http://www.ansteel.com.cn)

**Holdings**

Name	Equities	%	Valuation
<a href="#">Zhuzhou Smelter Group Co.,Ltd.</a> (600961)	10,000,000	1.90%	20,589,500 USD

© 2016 People , Fundamentals and Ownership

**FACTSET**

	<div> <div>Mens Chill Long Slee...</div> <div>\$55</div> </div>	
--	---	--



**4-traders.com** : [Equities](#) [Indexes](#) [Commodities](#) [Currencies](#) [News](#) [Analysis](#) [Top & Flop](#) [Market Screener](#) [Tools](#) [Watchlists](#) [Our Services](#)

**About** : [Surperformance SAS](#) [Contact us](#) [Advertise](#) [Legal informations](#) [About us](#) [RSS](#) [2.0](#)

**Stay Connected** : [Facebook](#) [Twitter](#)

**Partners** : [Börse: Aktien, Kurse und Nachrichten](#) [Best tweets](#)



Symbol or Keyword(s)

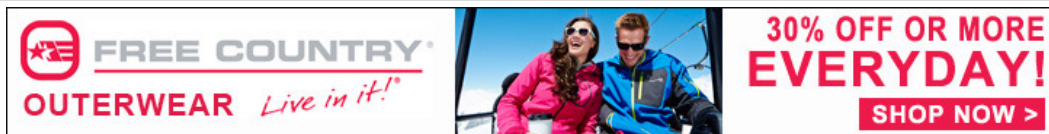


Log in

Sign up



Equities Indexes Commodities Currencies News Analysis Top &amp; Flop Market Screener Tools Watchlists Our Services



4-Traders Homepage &gt; Equities &gt; SHANGHAI STOCK EXCHANGE &gt; Maanshan Iron &amp; Steel Co Ltd 600808 CNE000000DD4

**MAANSHAN IRON & STEEL CO LTD (600808)**

+ Add to my list

1

Like

0

■ End-of-day quote - 01/18

**2.96** CNY**-1.00%**

01/05

2015

2015

**MAANSHAN IRON & : Notice of Board of Directors Meeting****MAANSHAN IRON & : Announcement on Resolutions of the Board of Direct..****MAANSHAN IRON & : Financial Services Agreement**[Summary](#) [Quotes](#) [Charts](#) [News](#) [Analysis](#) [Calendar](#) **Company** [Financials](#) [Consensus](#) [Revisions](#)**MAANSHAN IRON & STEEL CO L REPORT: exclusively and for free\*.**[Download here »](#)**Business Summary****Manufactures and distributes iron and steel products**

Maanshan Iron &amp; Steel Co., Ltd. engages in the manufacture and sale of iron and steel products.

Its activities include metallurgy and extended processing of ferrous metals; production and sale of coke, coke chemical products, thermostatic materials and power supply; dock operation, storage, transportation, trading and other iron and steel related business; extended processing of iron and steel products; production and sales of metallic products; steel framework, equipment production and related services; maintenance of vehicles, recycle, and processing of discarded vehicles; provision of construction and related services; decoration services; and rendering of technological services and consultancy services.

Its products include the steel plates, steel section, wire rods, and train wheels.

The company was founded on September 1, 1993 and is headquartered in Maanshan, China.

**Number of employees** : 40 382 persons.**Sales per Businesses**

	2013		2014		Delta
	CNY (in Million)	%	CNY (in Million)	%	
Iron, Steel & Related By-products	73,849	100%	59,821	100%	-23.45%

**Sales per Regions**

	2013		2014		Delta
	CNY (in Million)	%	CNY (in Million)	%	
China	64,488	87.3%	55,338	92.5%	-16.53%
International	1,815	2.5%	2,929	4.9%	+38.04%

**Managers**

Name	Age	Since	Title
<a href="#">Hai Fan Qian</a>	55	2010	GM, Executive Director & Chief Accountant
<a href="#">Xiao Feng Zhang</a>	54	1997	Chairman-Supervisory Board
<a href="#">Yi Ding, PhD</a>	52	2013	Chairman
<a href="#">Jin Rong Fang</a>	52	2004	Member-Supervisory Board & Deputy Manager-Finance
<a href="#">Hai Chao Gao</a>	58	2002	Chief Engineer & Deputy General Manager
<a href="#">Chun Wa Wong</a>	42	2005	Independent Member-Supervisory Board
<a href="#">Xian Li Liu</a>	61	2006	Member-Supervisory Board
<a href="#">Tian Bao Ren</a>	52	2008	Board Secretary, Executive Director & Deputy GM
<a href="#">Tong Zhou Qin, CPA</a>	46	2011	Independent Non-Executive Director
<a href="#">Ya Da Yang</a>	60	2011	Independent Non-Executive Director

**Sector**[Basic Materials](#)[Mineral Resources](#)[Metals & Mining](#)[Steel](#)[Steel - NEC](#)

ADVERTISEMENT

**BMI Research**[bmiresearch.com](#)

Country Risk Analysis &amp; Forecasts. Global Coverage - Free Trial Today!


**Top 10 Stocks for 2016****6 Stocks Set to Soar****New 2015 Nissan Frontier****Sector Steel**

Growth (Revenue)

Profitability

[CITIC LTD](#) [NIPPON STEEL & SU..](#) [POSCO](#) [FOSUN INTERNATIONAL..](#) [NUCOR CORPORATION](#) [VALE SA](#) [THYSSENKRUPP AG](#) [SEVERSTAL' PAO](#) [ARCELORMITTAL](#) [HEBEI IRON AND ST..](#) [ANGANG STEEL COMP..](#) [HYUNDAI STEEL CO](#) [VOESTALPINE AG](#) [NOVOLIPETSK STEEL..](#) [STEEL DYNAMICS, I..](#) [SHANXI TAIGANG ST..](#) [EREGLI DEMIR VE C..](#) [TATA STEEL LIMITE..](#) [HAINAN MINING CO..](#) [MAANSHAN IRON & S..](#)

## Shareholders

Maanshan Iron & Steel Co Ltd (600808 - SHANGHAI STOCK EXCHANGE) 

» [Sector Steel](#)

We use cookies to allow you to log in to your account and share content, to carry out statistics, and to show you ads based on your interests.

[See our Cookie Policy](#) [Close](#)

## Co L : Connections

En Ying Zhu	24,257,204	0.41%
Ji Xiang Li	19,644,937	0.33%
Lion Fund Management Co., Ltd.	17,182,707	0.29%
Sichuan Trust Co., Ltd.	8,302,400	0.14%
Feng Tao Liu	8,000,100	0.13%
Rong Yao Wang	7,981,475	0.13%
Jun Ying Zhang	7,520,000	0.13%
Jin Lian Zhang	6,837,097	0.11%
HSBC Global Asset Management (Hong Kong) Ltd.	6,545,400	0.11%

[Century Global Commodities Corp](#)  
[Sureland Industrial Firefighting Ltd.](#)  
[ACT Business Consultants Ltd.](#)  
[Association of Chartered Certified Accountants \(Hong Kong\)](#)  
[Chongqing Iron & Steel \(Group\) Co. Ltd.](#)  
[RIW C.P.A. Ltd.](#)  
[Economic Association of Maanshan](#)  
[China Fire & Security Group, Inc.](#)  
[Magang \(Group\) Holding Co. Ltd.](#)  
[The Chinese Institute of Certified Public Accountants](#)  
[Hong Kong Institute of Certified Public Accountants](#)  
[Anhui University of Technology](#)

## Company contact information

Maanshan Iron & Steel Co., Ltd.  
 No. 8 Jiu Hua Xi Road  
 Maanshan City, Anhui 243003

Phone : +86.555.2888158  
 Fax : +86.555.2887284  
 Web : [www.magang.com.cn](http://www.magang.com.cn)

© 2016 People , Fundamentals and Ownership **FACTSET**



**4-traders.com** : Equities Indexes Commodities Currencies News Analysis Top & Flop Market Screener Tools Watchlists Our Services

**About** : Surperformance SAS Contact us Advertise Legal informations About us **RSS 2.0**

**Stay Connected** : Facebook Twitter

**Partners** : Börse: Aktien, Kurse und Nachrichten Best tweets

8,000 companies  
+ 4,000 non-businesses

IN THIS SECTION ▼

# Tisco - Taiyuan Iron & Steel (Group) Co., Ltd.

[www.tisco.com.cn](http://www.tisco.com.cn)

## COMPANY INFORMATION

## COP

## CONTRIBUTIONS

### Participant Since

02 May 2012

Next COP due on: 22 April 2016

### Overview

**Country:** China

**Org. Type:** Company

**Sector:** Industrial Metals & Mining

**Global Compact Status:** Active

**Employees:** 39478

**Ownership:** State-owned

[Letter of Commitment ▶](#)



4-Traders Homepage > Equities > SHENZHEN STOCK EXCHANGE > Beijing Shougang Co., Ltd. 000959 CNE000001196

BEIJING SHOUGANG CO., LTD. (000959)

+ Add to my list

0

Like

0

No quotes available

-- CNY

--.--%

2015 BEIJING SHOUGANG : Q1-Q3 Loses More Money

2015 BEIJING SHOUGANG : Shougang Invites Strategic Investment via Private ..

2015 BEIJING SHOUGANG : H1 Incurred CNY223mn Losses

SummaryNewsAnalysisCalendarCompanyFinancialsRevisions

BEIJING SHOUGANG CO., LTD. REPORT: exclusively and for free\*. [Download here »](#)

Business Summary

北京首钢股份有限公司

Engages in the smelting of iron and steel, as well as the rolling and processing of steel

Beijing Shougang Co., Ltd. engages in the smelting of iron and steel, as well as the rolling and processing of steel.

Its principal activities are manufacturing and selling wire rod. Other activities include manufacturing and selling adobe square, adobe plate, stick material, chemical products, coal gas, metal coke, pig iron, polished coil, water sediments and software.

The Group has its operations in the following China Districts: Huabei, Northeast, Hua Dong, Central South, Huanan, Southwest and Northwest.

The company was founded on October 15, 1999 and is headquartered in Beijing, China.

Number of employees : 9 606 persons.

Sales per Businesses

	2013		2014		Delta
	CNY (in Million)	%	CNY (in Million)	%	
Cold-Rolled Sheet	8,492	91.8%	-	-	-
Steel	624.20	6.7%	-	-	-
Other Service Income	126.79	1.4%	-	-	-

re use of cookies to allow you to log in to your account and share content, to carry out statistics, and to show you ads based on your interests. [See our Cookie Policy](#) [Close](#)

Sales per Regions

	2013		2014		Delta
	CNY (in Million)	%	CNY (in Million)	%	
China	9,250	100%	23,984	100%	+61.43%

Managers

Name	Age	Since	Title
<a href="#">Kai Qian</a>	54	-	President
<a href="#">Jimin Zhu</a>	71	-	Chairman
<a href="#">Jian Yi Fang</a>	63	-	Director
<a href="#">Guanglai Huo</a>	66	-	Director
<a href="#">Ning Xu</a>	61	-	Director
<a href="#">Yi Wang</a>	62	-	Director
<a href="#">Yong Gan</a>	69	-	Independent Director
<a href="#">Shanghua Dan</a>	71	-	Independent Director
<a href="#">Pei Yong Gao, PhD</a>	57	-	Independent Director
<a href="#">Xiong Yang</a>	50	-	Independent Director

- Sector
- Industrials
- Industrial Goods
- Machinery, Equipment & Components
- Electrical Components & Equipment
- Wires & Cables

ADVERTISEMENT

58% off

[AGPtek® 4-pin RJ9 Crystal Head Super Telephone Monaural ...](#)  
(35)  
~~CDN\$ 52.99~~  
**CDN\$ 21.99**

- onents & Equipment
- Growth (Revenue) Profitability
- PRYSMIAN SPA

BEIJING SHOUGANG ..

ZHEJIANG WANMA CO..

JIANGSU ZHONGTIAN..

EVE ENERGY CO LTD

TONGLING JINGDA S..

ZHEJIANG SHANGFEN..

CHINA-KINWA HIGH..

ZHONGLI SCIENCE A..

LS CORP.

EL SEWEDY ELECTRI..

ENCORE WIRE CORPO..

JIANGSU TONGGUANG..

GOLD CUP ELECTRIC ..

FUJIAN NANPING SU..

NINGBO ORIENT WIR..


ROUTON ELECTRONIC..

ILJIN HLDG CO LTD

OMAN CABLES INDUS..

PKC GROUP OYJ

Shareholders

Beijing Shougang Co., Ltd. (000959 - SHENZHEN STOCK EXCHANGE) 

Name	Equities	%
Beijing State-Owned Assets Supervision & Administration	115,521,390	9.58%
China International Fund Management Co., Ltd.	16,986,522	1.41%
First-Trust Fund Management Co., Ltd.	3,499,920	0.29%
Jun Yu	3,435,800	0.28%
ICBC Credit Suisse Asset Management Co., Ltd.	3,384,685	0.28%
China Southern Asset Management Co., Ltd.	2,672,200	0.22%
Zhao Guang He	2,507,246	0.21%
Everbright Pramerica Fund Management Co., Ltd.	2,285,217	0.19%
Zhonggan Longtaihe Tianjin Equity Invst Fund Partnership LP	2,136,000	0.18%
GF Fund Management Co., Ltd.	986,455	0.082%

Holdings

Name	Equities	%	Valuation
BAIC MOTOR CO LTD DOM SH	1,028,748,707	18.7%	1,030,055,218 USD

» Sector Electrical Components & Equipment

Beijing Shougang Co., Ltd. : Connections

 [RONGFENG HOLDING GROUP CO.,LTD.](#)  
 [Rizhao Port Co., Ltd.](#)  
 [Hua Xia Bank Co., Limited](#)  
 [GF Securities Co Ltd](#)  
 [Eastcompeace Technology Co Ltd](#)  
 [Changjiang Securities Company Limited](#)  
 [Beiqi Foton Motor Company Limited](#)  
 [Beijing Cisri Gaona Materials & Tech Co](#)  
China Audit Society  
Beijing Shougang New Iron & Steel Co. Ltd.  
Chinese Materials Research Society  
Hebei Shougang Qian'An Iron & Steel Co. Ltd.  
Capital Steel Corp. Ltd.  
Shougang Holding (Hong Kong) Ltd.  
Shougang Group Corp.  
China Iron & Steel Research Institute Group  
Jiang Tai Insurance Brokers Co. Ltd.  
Beijing Guoxiang Asset Management Co. Ltd.  
Chinese Society for Metals  
China International Taxation Research Institute  
China Iron & Steel Industry Association  
Baosteel Group Corp.  
Chinese Academy of Social Sciences  
BDO China Shu Lun Pan Certified Public Accountants LLP  
Society of Public Finance of China  
Shougang Shuicheng Iron & Steel (Group) Co. Ltd.  
China Urban Financial Society  
Chinese Academy of Engineering  
Xinbang Investment Co. Ltd.  
Beijing Shougang Cold Rolled Sheet Co. Ltd.  
Beijing Institute of Certified Public Accountants  
Chinese Society of Rare Earth The  
China Association For Science & Technology

Company contact information

Beijing Shougang Co., Ltd.  
99 Shijingshan Road  
Beijing 100041

Phone : +86.10.8829.3727  
Fax : +86.10.6887.3028  
Web : [www.sgof.com.cn](http://www.sgof.com.cn)

© 2016 People , Fundamentals and Ownership

FACTSET

[Sennheiser PC 7 ...](#)  
**CDN\$ 44.99**

24%  
off

[Logitech ...](#)  
**CDN\$ 45.12**

[Cyber Acoustics ...](#)  
**CDN\$ 29.99**



4-traders.com : Equities Indexes Commodities Currencies News Analysis Top & Flop Market Screener Tools Watchlists Our Services

About : Surperformance SAS Contact us Advertise Legal informations About us   

Stay Connected : Facebook Twitter

Partners : Börse: Aktien, Kurse und Nachrichten Best tweets